

Ontologies for Knowledge Modeling and Creating User Interface in the Framework of Telemedical Portal

Jerzy Błaszczczyński¹, Michał Kosiedowski², Cezary Mazurek², Szymon Wilk¹

¹Institute of Computing Science, Poznań University of Technology,
60-965 Poznań, Poland
{jurek.blaszczynski, szymon.wilk}@cs.put.poznan.pl

²Poznań Supercomputing and Networking Center,
61-704 Poznań, Poland
{kat, mazurek}@man.poznan.pl

Abstract: The telemedical portal is an environment that provides a set of communication, storage and decision support services. The telemedical portal is designed to support diversified clinical problems, therefore it should be flexible and extensible. To provide the required flexibility we separated the domain specific knowledge from the generic operational knowledge (implemented as services). The domain knowledge is represented by ontologies and knowledge bases that describe specific problems. Such separation allows the coupling of services with different knowledge bases without any changes in the operational knowledge. We present the overall architecture of the telemedical portal and use the consultation service and the knowledge base describing the problem of multiple organ injuries to present the separation and coupling. Specifically, we show how the generic consultation service stores information and automatically creates the user interface using the provided knowledge base.

1 Introduction

A telemedical portal is an environment that provides telemedical services to its users -- physicians, health care professionals and medical students. Telemedical portals are being constructed to support the complex processes of medical treatment and management with the use of the advanced networking tools and technologies. The tools found within such environments range from medical record databases, through image and video transmission, up to clinical decision support systems. The telemedical services built on top of these tools simplify communication between the users, improve standards of health care treatment, administration and training. Examples of telemedical services are: a teleconsultation service that allows one to consult medical cases across different health care units, a teleeducation service that is used in the training of students of medicine, and a reference cases registry service that allows to find information about treatment strategies that should be applied in difficult medical cases. The domain knowledge on which portal services operate is shared between different services. It is also assumed that services operate on knowledge from different medical domains. Such knowledge usually has a diversified structure. Therefore, it is crucial for the environment to separate the domain knowledge from the operational knowledge and services implementing it.

In this paper we present an approach that enables flexible modeling of the domain knowledge that was applied during the design and development of the “Teledycyna Wielkopolska” portal [TW]. The telemedical portal offers the set of services listed above and focuses on the teleconsultation service that has already been introduced into clinical practice. Flexibility is achieved by separating the domain knowledge from the operational knowledge (services) and representing the domain knowledge in the form of ontologies and knowledge bases. The domain ontology lists and organizes concepts for a considered problem. It defines classes of concepts and relationships between them. Ontologies are schemas that guide the construction of knowledge bases storing instances of defined classes. Thus, using a database metaphor, an ontology can be seen as the schema of a knowledge base. Separation of the domain knowledge from the operational knowledge not only improves reusability of system components (a single service can be used with several ontologies and knowledge bases) but also supports automatic customization of services. As an example we present automatic generation of the user interface for the teleconsultation service.

The structure of this document is the following. In section 2 we present the telemedical portal and its architecture. In section 3 we present domain ontologies and knowledge bases. In section 4 we show how the domain knowledge supplemented with interface knowledge can be used to automatically create the user interface. We conclude our presentation in section 5.

2 Telemedical Portal “Teledycyna Wielkopolska”

The architecture of the “Teledycyna Wielkopolska” portal has been drawn upon the well-established solutions from the grid technology domain. Through the assessment of user requirements we found the challenges set by the need of delivering a complex system providing a set of reliable telemedical services in a form of a telemedical portal very similar to those arising in the grid technology research [GGF]. Grid technology provides some useful models which could be adopted by the constructed telemedical portal. The key element for the success of the complex and diverse regional telemedical portal was a flexible access environment to remote and distributed services such as digital libraries, video streaming services, decision support services and data management systems. Consideration also had to be given to the workflow nature of some of the telemedical processes. The analysis of the telemedical portal requirements led us to the choice of several methodologies for the construction of the telemedical portal environment, selected from the set of solutions developed by Poznan Supercomputing and Networking Center within various grid projects [KMS02, BKM03, KKM04].

Assessment of the user needs showed that the developed environment must fulfill the following application scenarios:

- *Teleconsultations* to support the specialized remote consultations for the hard medical cases that are encountered in regional hospitals and that need to be consulted remotely with experts in a specialized clinic [KOS05],

- *Reference case registry* to manage and provide a database of specially interesting cases that illustrate the procedures to undertake in similar cases found by doctors in their everyday work,
- *Medical teleeducation* to allow the medical personnel to constantly widen their knowledge and thus improve the overall quality of the regional health care,
- *Clinical decision support* to enable semi-automatic decision support in the medical cases found by doctors in their everyday work.

The above-listed scenarios formed the basis for the creation of four high-level telemedical services as shown in Figure 1. The services were designed to manage the descriptors of various telemedical objects such as, for example, teleconsultation cases or reference medical cases, and to store them in the underlying service databases for quick access from user interfaces. These descriptors are subject to advanced modeling of data through ontologies. We are currently working on solutions in this area; the proposed models are described in section 3. To execute the specialized tasks needed to fulfill the user requests and to complete the required action, the high-level services utilize the functionality of the specialized resource management systems via the access interfaces enabled in the form of broker services. In the case of the telemedical portal these low-level systems identified as necessary to carry out the specialized tasks were the Data Management System [KMM05], the Digital Library System [MW05] and the Multimedia Content Delivery System [CKM05]. These systems are used to store, manage and otherwise process the specific types of multimedia information and contents to which references are found within the telemedical object descriptors manage by the high-level services.

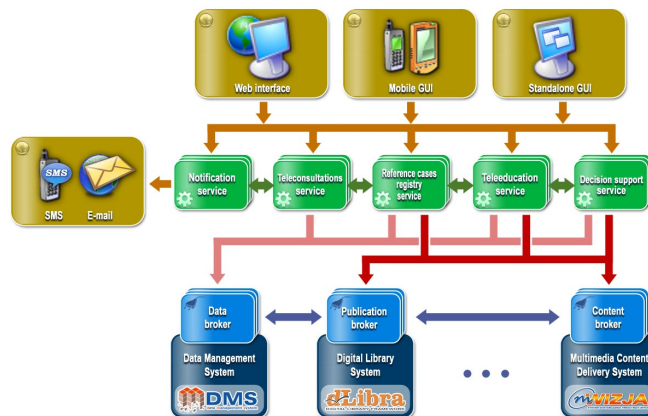


Figure 1 The architecture of the “Telemedycyna Wielkopolska” Portal

In addition, the Notification Service designed and developed within the confines of the GridLab project was introduced as part of the Telemedical Portal environment. The

Notification Service helps to reliably deliver SMS or e-mail notifications of events, for example, to doctors participating in the teleconsultation process [AGK05].

The high-level services are accessed from a diverse set of graphical user interfaces. The main user interface is a web-based application delivered within the GridSphere Portal Framework [NRW03]. In addition, a mobile graphical user interface for ‘anytime-anywhere’ access and a standalone user interface for more sophisticated access scenarios are planned. To facilitate the construction of specialized telemedical portlets and other Java-based user interfaces we utilize the capabilities of the PROGRESS Portlet Framework [BKMS04]. The component architecture of the Framework allows to efficiently reuse parts of the already existing code during the construction of a new portlet and can be efficiently used for the construction of diverse Java-based user interfaces. The Framework comprises of four layers, one of which, the Content Generator, is fully dedicated to the generation of user interface screens. This layer is used to define the look and feel of the user interface. It is currently being extended to include ontologies for automatic creation of graphical user interfaces; this is described in section 4.

3 Ontology for Modeling Domain Knowledge

Our approach to model the domain knowledge for the telemedical portal has been inspired by the research on knowledge-based clinical systems with domain ontologies separated from generic solving methods (solvers) [M98, M99] and by our experience with ontology-driven clinical decision support systems [MSW05, MWF05].

The separation of ontologies (and knowledge bases constructed on their basis) from solvers increases the robustness and reusability of constructed systems – a single ontology can be coupled with various solvers, and on the contrary, a single solver can operate on various ontologies. Thus it is possible to create independent libraries of specific ontologies and packages of generic solvers [M98]. This separation is not only important from a system engineering perspective, but it results directly from the research in medical informatics. Ontologies represent health-related application areas in the form that is comprehensive for the machine and for the human, while generic solvers represent fundamental algorithms for processing clinical data and knowledge [M99].

The notion of a solver has been usually limited to procedures that solve decision problems (e.g., optimizers or classifiers). However, it can be generalized to include any procedure or service that operates on ontologies and derived knowledge bases. They are not restricted to decision solvers, but also include storage or communication services. Separating the functionality of a system between domain ontologies (and knowledge bases) and generic services adds to the reusability of these components and allows building advanced clinical decision support systems.

The teleportal offers a set of diversified services that can be used to support various clinical problems. However, using all the available capabilities in practice requires the portal to be easily adaptable – modifying the already defined and supported clinical problems (e.g., changing the list of considered clinical attributes) or adding new ones

should impose only minimal changes to the portal. To satisfy this requirement we designed an ontology that represents a general schema of clinical knowledge processed by the portal. Then the developed ontology was used to construct knowledge bases describing information considered in specific problems. The ontology and derived knowledge bases were easily combined with all services provided by the portal. In the text we focus on the teleconsultation service. Moreover, we use the knowledge base built for the problem of multiple organ injuries as an example.

The ontology is presented in Figure 2. For the sake of clarity we excluded classes of concepts that represent administrative and demographic information (i.e., patient and episode). Moreover, we show only those attributes that are required for comprehensive and concise presentation of the ontology and sample entries in the derived knowledge base.

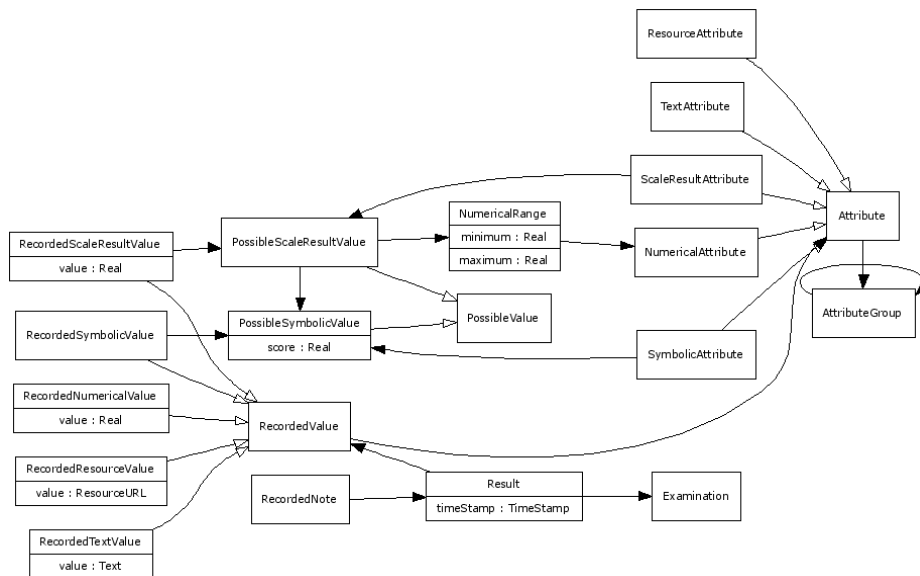


Figure 2: Ontology of the domain knowledge

The ontology relies on the *entity-attribute-value* representation of information NMC99 that is very well suited for diverse and heterogeneous data. Moreover, this representation eases object-at-a-time queries (e.g., select all examination results for patient X collected his stay in the Emergency Department) that are very frequent in clinical information systems [CNM00]. The ontology is built around three main classes – *Examination*, *Attribute* and *RecordedValue* that correspond to entity, attribute and value, respectively.

The *Attribute* class represents a clinical attribute. Attributes can be grouped into groups (e.g., attribute describing spine injuries) represented by *AttributeGroup*. We allow multi-level grouping with attribute groups containing subgroups and attributes. In the knowledge base for multiple organ injuries the “injuries of motor organs” are? composed

of groups related to specific organs (hip, arm, pelvis etc.) that further include attributes representing specific injuries.

Attribute is an abstract class further specialized into concrete classes representing attributes of specific types:

- *ResourceAttribute* represents an attribute with values being resources (e.g., images, movies, sounds) managed by the Data Management System..
- *TextAttribute* represents an attribute with values given as texts.
- *NumericalAttribute* represents an attribute with numerical (continuous) values. It is possible to define the range of possible values by linking an instance of the *NumericalRange* that specifies minimum and maximum values, to an instance of *NumericalAttribute*. An example of a numerical attribute is presented in Figure 3.

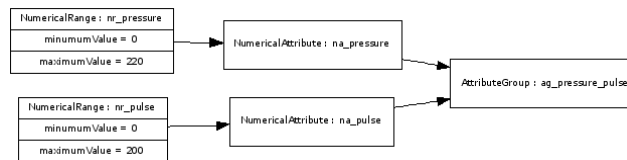


Figure 3. Definition of numerical attributes representing pulse and blood pressure

- *SymbolicAttribute* indicates an attribute with symbolic values. Possible values are provided as instances of the *PossibleSymbolicValue* class. An example of a symbolic attribute is presented in Figure 4.
- *ScaleResultAttribute* indicates an attribute being the aggregated result of a scale (e.g., Glasgow Coma Scale – GCS). The scale can be represented by *AttributeGroup* composed of several attributes from the *SymbolicAttribute* class and a single attribute from the *ScaleResultAttribute*. Possible values for each symbolic attribute (instances of the *PossibleSymbolicValue* class) can store scores, thus the overall result can be calculated by summing up the scores of selected values. Glasgow Comma Scale mentioned above is defined as a group of three symbolic attributes (eye opening, verbal response and motor response) and a result attribute. The result is calculated as the total of scores bound to selected values for the three symbolic attributes. Usually the score result is augmented by a discretization that translates the score into a categorical description (symbolic value). For Glasgow Comma Scales the following score intervals are considered: 13-15 – mild brain injury, 9-12 – moderate brain injury and 3-8 – severe brain injury. The ontology allows one to define such discretizations by linking appropriate instances of the *PossibleScaleResultValue* class that associate *NumericalRange* with *PossibleSymbolicValue* to an instance of *ScaleResultAttribute*. A definition of Glasgow Coma Scale is given in Figure 5.

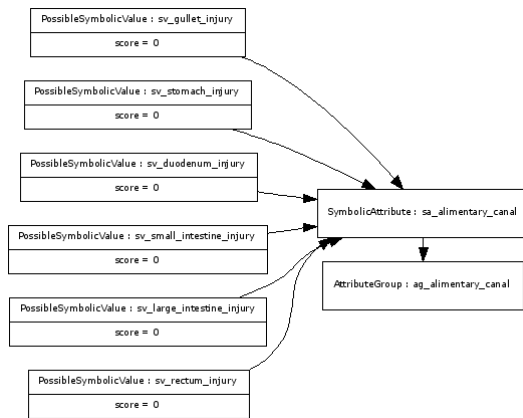


Figure 4. Definition of an attribute representing injuries of the alimentary canal

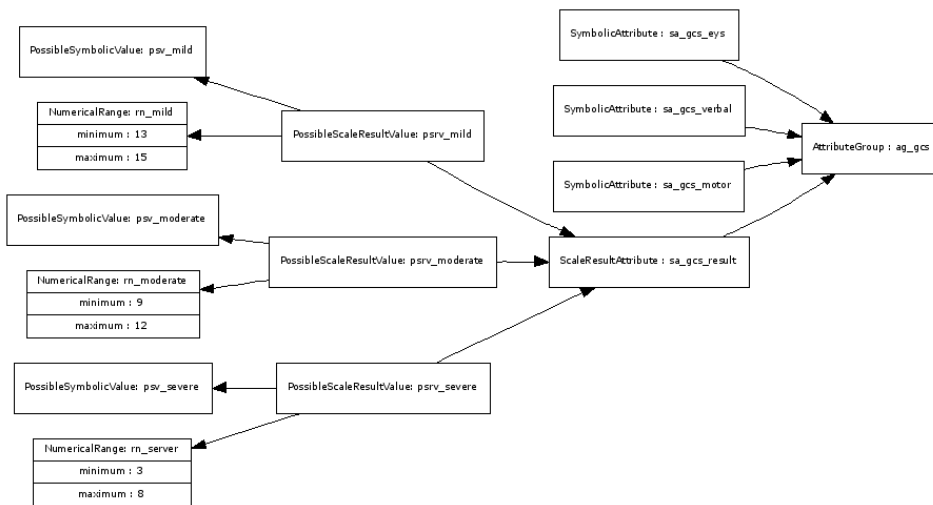


Figure 5. Definition of Glasgow Comma Scale

The value of an attribute is represented by the abstract *RecordedValue* class. The class is further specialized into concrete classes representing specific values. This specialization matched the specialization of the *Attribute* class, i.e., for each attribute class there is a specific value class that is suited for storing information of a specific type:

- *RecordedResourceValue* represents a value of *ResourceAttribute*. The information is stored as the URL of a resource in the Data Management System.

- *RecordedTextValue* represents a value of *TextAttribute* and stores information as text.
- *RecordedNumericalValue* represents a value of *NumericalAttribute* and stores information as a real number.
- *RecordedSymbolicValue* represents a value of *SymbolicAttribute* and stores a link to a selected instance of the *PossibleSymbolicValue* class.
- *RecordedScaleResultValue* represents a value of *ScaleResultAttribute*. It stores the total score for a scale and the link to an appropriate instance of the *PossibleScaleResultValue*.

RecordedValue is linked to an instance of the *Result* class that holds additional information describing the value (e.g., timestamp indicating when the value was recorded). Each instance of *Result* can be annotated with an instance of *RecordedNote* additional information that supplements information stored in *RecordedValue*. Currently, only text notes are supported, but we plan to extend the ontology and introduce voice notes, as they are very popular in clinical practice. We decided to separate *Result* from *RecordedValue* as we plan to use the ontology for constructing decision models for the decision support service. Decision models will use information in the form of instances of specific *RecordedValue* classes where annotations are superfluous, and thus we will be able to avoid such overload.

Finally, instances of the *Result* class are linked to an instance of the *Examination* class. Thus, a single instance of *Examination* can be associated with multiple instances of *Result*. Moreover, it is also possible to specify several values of the same attribute within a single instance of *Examination*. A samples examination is presented in Figure 6.

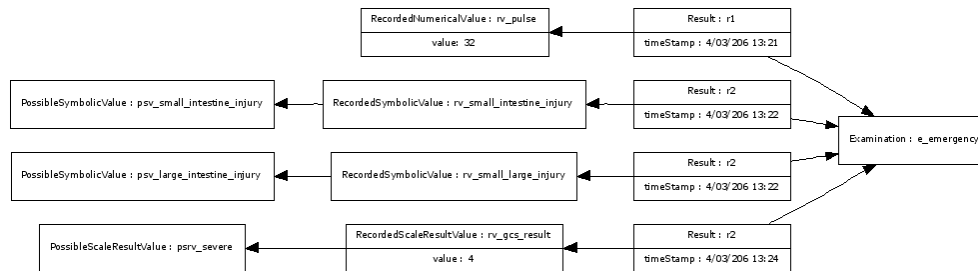


Figure 6. Results of an examination

Finally, instances of the *Result* class are linked to an instance of the *Examination* class. Thus, a single instance of *Examination* can be associated with multiple instances of *Result*. Moreover, it is also possible to specify several values of the same attribute within a single instance of *Examination*. A samples examination is presented in Figure 6.

We use OWL to store the domain ontology and derived knowledge bases. OWL was developed for a semantic web and became a common representation for ontological

models and knowledge bases [OWL]. It has been supported by auxiliary technologies, like RDDL – a counterpart of SQL language for querying ontologies. Specifically, we use the Jena library [JENA] to store and process the knowledge represented in OWL.

4 Automatic Generation of the User Interface

Ontologies and knowledge bases are not only used to represent and store domain knowledge, but they can also be used for automatic generation of user interfaces [EPM94]. Such interfaces reflect the ontologies and knowledge bases on which they are based, and thus they can adapt whenever the underlying knowledge is modified. The idea of automatically generated interfaces was developed and applied for the knowledge acquisition tools for creating and updating knowledge bases [GMF03] and it can be easily adopted for the telemedical portal.

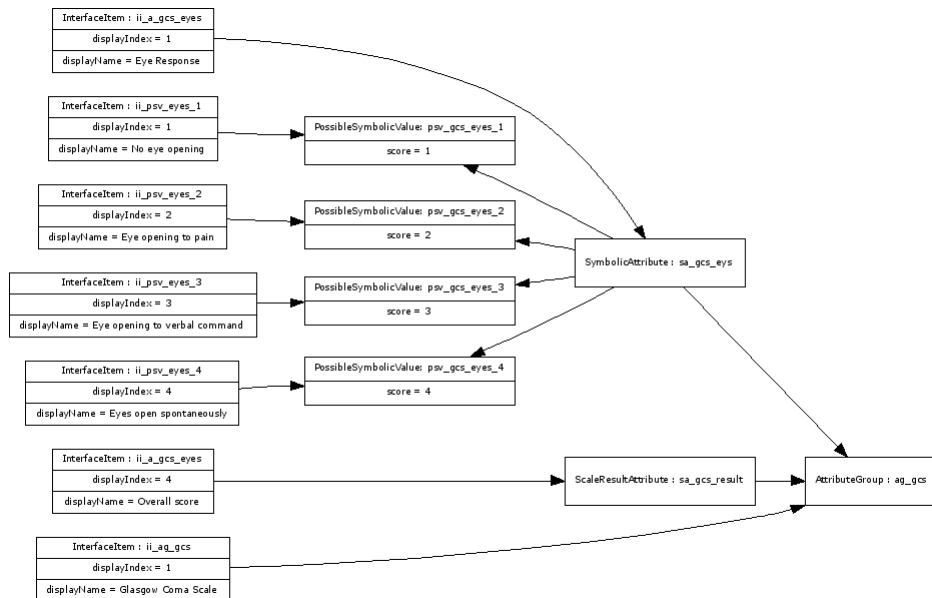
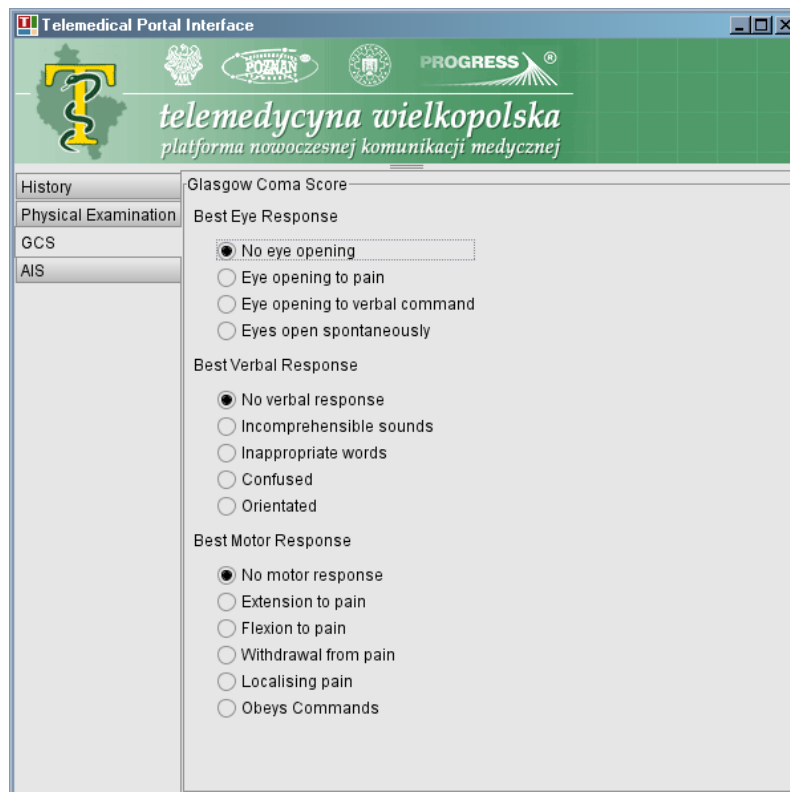


Figure 7. Interface knowledge for Glasgow Coma Scale

In order to construct the user interface we had to provide additional information describing the interface, e.g., names of displayed objects (attributes, possible values etc.), their sequence on the screen and additional descriptions. This information forms the interface knowledge. We did not combine the interface knowledge into the domain knowledge as this would have limited the flexibility of the solution. Now, with the separation of the domain and interface knowledge we can couple several different interfaces with a single domain ontology and knowledge base. In the simple case the interfaces can be in different languages, and in the more complex case we could provide a more advanced interface for the service accessed from a desktop computer, and a

simplified one when the service is used from the mobile platform (e.g., a handheld computer or mobile phone).

The interface knowledge is modeled using a simple interface ontology with only one class – *InterfaceItem* that contains information mentioned above. Instances of the *InterfaceItem* class are stored in the interface knowledge base and are linked to appropriate instances in the domain knowledge base. The interface knowledge for Glasgow Coma Scale is presented in Figure 7 (for the sake of brevity we limited the number of presented instances).



The screenshot displays a web-based interface for the Glasgow Coma Scale. The header features the text "telemedycyna wielkopolska" and "platforma nowoczesnej komunikacji medycznej" alongside logos for "PROGRESS" and "POZNAŃ". A sidebar on the left contains navigation tabs: "History", "Physical Examination", "GCS", and "AIS". The main content area is titled "Glasgow Coma Score" and is divided into three sections: "Best Eye Response", "Best Verbal Response", and "Best Motor Response". Each section contains a list of radio button options. In the "Best Eye Response" section, "No eye opening" is selected. In the "Best Verbal Response" section, "No verbal response" is selected. In the "Best Motor Response" section, "No motor response" is selected.

Figure 8. Rendered interface for Glasgow Coma Scale

The domain knowledge and the interface knowledge are transformed into a running interface following a set of simple rules that bind specific widgets (editing tools) to instances of specific classes from the domain knowledge (e.g., values of *SymbolicAttribute* are entered using selection lists, while values of *TextAttribute* or *NumericalAttribute* are provided via text fields). Then the widgets are rendered using the interface knowledge (e.g., they are labeled with provided descriptions and laid out according to a defined sequence). The rendered interface for Glasgow Coma Scale is presented in Figure 8.

5 Conclusions

We presented the telemedical portal “Telemedycyna Wielkopolska” and described an approach to flexible modeling of the domain knowledge that is stored and processed in the environment of the portal. This approach assumes separation of the domain knowledge and the operational knowledge (portal services). We used ontologies and knowledge bases to model the structure of the domain knowledge. This significantly increases the extensibility of the portal as it is very easy to adapt the portal to new medical problems by supplying specialized knowledge bases. We also showed how the domain knowledge augmented with additional interface knowledge can be used for automatic generation of the user interface for the portal.

Bibliography

- [AGK05] Adamski, M., Grabowski, P., Kurowski, K., Lewandowski, B., Ludwiczak, B., Nabrzyski, J., Oleksiak, A., Piontek, T., Pukacki, J., Strugalski, R.: GridLab Middleware Services for Managing Dynamic Computational and Collaborative Infrastructures (VOs). Proceedings of 13th Annual Mardi Gras Conference, Baton Rouge USA (2005) 35-40.
- [BKM05] Bogdanski, M., Kosiedowski, M., Mazurek, C., Rabiega M., Wolniewicz, M.: Flexibility and user-friendliness of grid portals: the PROGRESS approach. To appear in Concurrency and Computation: Practice and Experience, John Wiley & Sons, Ltd.
- [BKM04] Bogdanski, M., Kosiedowski, M., Mazurek, C., Stroinski, M.: Facilitating the Process of Enabling Applications within Grid Portals. Lecture Notes in Computer Science 3251: Grid and Cooperative Computing – GCC 2004. Springer-Verlag, Berlin Heidelberg New York (2004) 175-182.
- [BKM03] Bogdanski, M., Kosiedowski, M., Mazurek, C., Wolniewicz, M.: GRID SERVICE PROVIDER: How to improve flexibility of grid user interfaces. Lecture Notes in Computer Science 2657: Proceedings of the International Conference on Computing Science ICCS 2003. Springer-Verlag, Berlin Heidelberg New York (2003) 255-263.
- [CNM00] Chen, R.; Nadkarni, P.M.; Marengo, L.; Levin, F.; Erdos, J.; Miller, P.L.: Exploring performance issues for a clinical database organized using an entity-attribute-value representation. Journal of the American Medical Informatics Association 2000, vol. 7, 475-487.
- [CKM05] Czynnek, M., Kusmierk, E., Mazurek, C., Stroinski, M.: Large-Scale Multimedia Content Delivery over Optical Networks for Interactive TV Services. To appear in Future Generation Computer Systems, Elsevier Science.
- [EPM94] Eriksson, H.; Puerta, A.R.; Musen, M.A.: Generation of knowledge-acquisition tools from domain ontologies. International Journal of Human-Computer Studies 1994, vol. 41, 425-453.
- [GGF] Global Grid Forum, <http://www.ggf.org/>.
- [GMF03] Gennari, J.H.; Musen, M.A.; Fergerson, R.W.; Grosso, W.E.; Crubezy, M.; Eriksson, H.; Noy, N.F.; Tu, S.W.: The evolution of Protégé: An environment for knowledge-based systems development. International Journal of Human-Computer Studies 2003, vol. 58, 89-123.
- [JENA] Jena: Semantic Web Framework, <http://jena.sourceforge.net>
- [KKM04] Kosiedowski, M., Kurowski, K., Mazurek, C., Nabrzyski, J., Pukacki, J.: Workflow applications in GridLab and PROGRESS projects. To appear in Concurrency and Computation: Practice and Experience, John Wiley & Sons, Ltd.

- [KOS03] Kosiedowski, M., Lewandowski B., Mazurek, C., Rabięga, M., Stroinski, M., Węglarz, J., Koncepcja portalu internetowego jako narzędzia wspierającego procesy lecznicze w chirurgii urazowej na drodze telekonsultacji, Centrum Systemów Informacyjnych Ochrony Zdrowia, Poznan (2005)
- [KMM05] Kosiedowski, M., Malecki, M., Mazurek, C., Spychala, P., Wolski, M.: Integration of the Biological Databases into Grid-Portal Environments. Workshop on Database Issues in Biological Databases DBiBD. Edinburgh UK (2005).
- [KMS02] Kosiedowski, M., Mazurek, C., Stroinski, M.: PROGRESS – Access Environment to Computational Services Performed by Cluster of Sun Systems. In: Bubak, M., Noga, M., Turala, M.: Proceedings of the 2nd Cracow Grid Workshop. Cracow Poland (2002) 45-56.
- [M98] Musen, M.A.: Domain ontologies in software engineering: Use of Protégé with the EON architecture. *Methods of Information in Medicine* 1998, vol. 37, 540-550.
- [M99] Musen, M.A.: Scalable software architectures for decision support. *Methods of Information in Medicine* 1999, vol. 38, 229-238.
- [MW05] Mazurek C., Werla M.: Distributed Services Architecture in dLibra Digital Library Framework. Proceedings of the 8th International Workshop of the DELOS Network of Excellence on Digital Libraries on Future Digital Library Management Systems, Schloss Dagstuhl (2005).
- [MSW05] Michalowski, W.; Slowinski, R.; Wilk, Sz.; Farion, K.; Pike, J.; Rubin, S.: Design and development of a mobile system for supporting emergency triage. *Methods of Information in Medicine* 2005, vol. 44, 14-24.
- [MWF05] Michalowski, W.; Wilk, Sz.; Farion, K.; Pike, J.; Rubin, S.; Slowinski, R.: Development of a decision algorithm to support emergency triage of scrotal pain and its implementation in the MET system. *INFOR* 2005, vol. 43, 287-301.
- [NMC99] Nadkarni, P.M.; Marengo, L.; Chen, R.; Skoufos, E.; Shepherd, G.; Miller, P.L.: Organization of heterogeneous scientific data using the EAV/CR representation. *Journal of the American Medical Informatics Association* 1999, vol. 6, 478-493.
- [NRW03] Novotny, J., Russell, M., Wehrens, O.: GridSphere: A Portal Framework For Building Collaborations. Proceedings of the 1st International Workshop on Middleware for Grid Computing. Rio de Janeiro Brazil (2003).
- [OWL] OWL Web Ontology Language. Overview, <http://www.w3.org/TR/owl-features/>.
- [TW] Telemedycyna Wielkopolska, <http://www.man.poznan.pl/telemedycyna/>.